

Exhibitors' Guide

Exhibitors' Guide

CONVENExpo™ drives virtual foot traffic to exhibitors so that lead generation can run continuously throughout your event. Attendees can chat directly with exhibitors and make critical business contacts inside the virtual exhibit hall.

As a virtual exhibitor you can:

- Choose from 10 booth designs to showcase your brand
- Brand your booth with a company logo and colors
- Feature your content (video, PDFs, and images)
- Live chat with booth visitors
- Automatically capture leads when attendees visit your booth

Booth Designs

Choose from 10 distinctive booth designs to best showcase your brand.

Detailed information for each design is found on the following pages.

Booth 1 • page 4



Booth 2 • page 5



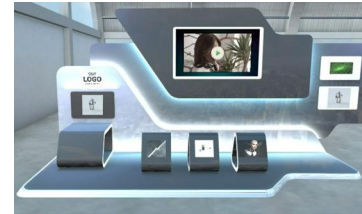
Booth 3 • page 6



Booth 4 • page 7



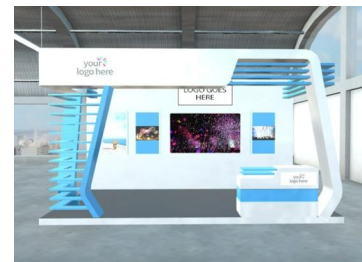
Booth 5 • page 8



Booth 6 • page 9



Booth 7 • page 10



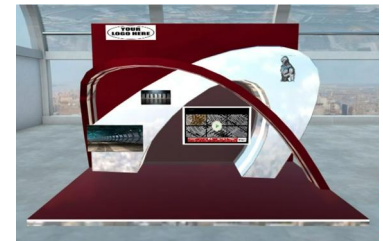
Booth 8 • page 11



Booth 9 • page 12



Booth 10 • page 13



Booth Designs

Booth 1 Features

- 4 logos
- 13 content areas for video, PDFs, and images
- Color variations are available



Booth Designs

Booth 2 Features

- 3 logos
- 9 content areas for video, PDFs, and images (ideal for 4 to 5 videos)
- Color variations are available



Booth Designs



Booth 3 Features

- 2 logos
- 8 content areas for video, PDFs, and images
- Color variations are available

Booth Designs

Booth 4 Features

- 2 logos
- 6 content areas for video, PDFs, and images
- Color variations are available



Booth Designs

Booth 5 Features

- 1 logo
- 7 content areas for video, PDFs, and images
- Color variations are available



Booth Designs

Booth 6 Features

- 2 logos
- 6 content areas for video, PDFs, and images
- Color variations are available



Booth Designs

Booth 7 Features

- 4 logos
- 4 content areas for video, PDFs, and images
- Color variations are available



Booth Designs

Booth 8 Features

- 2 logos
- 5 content areas for video, PDFs, and images
- Color variations are available



Booth Designs

Booth 9 Features

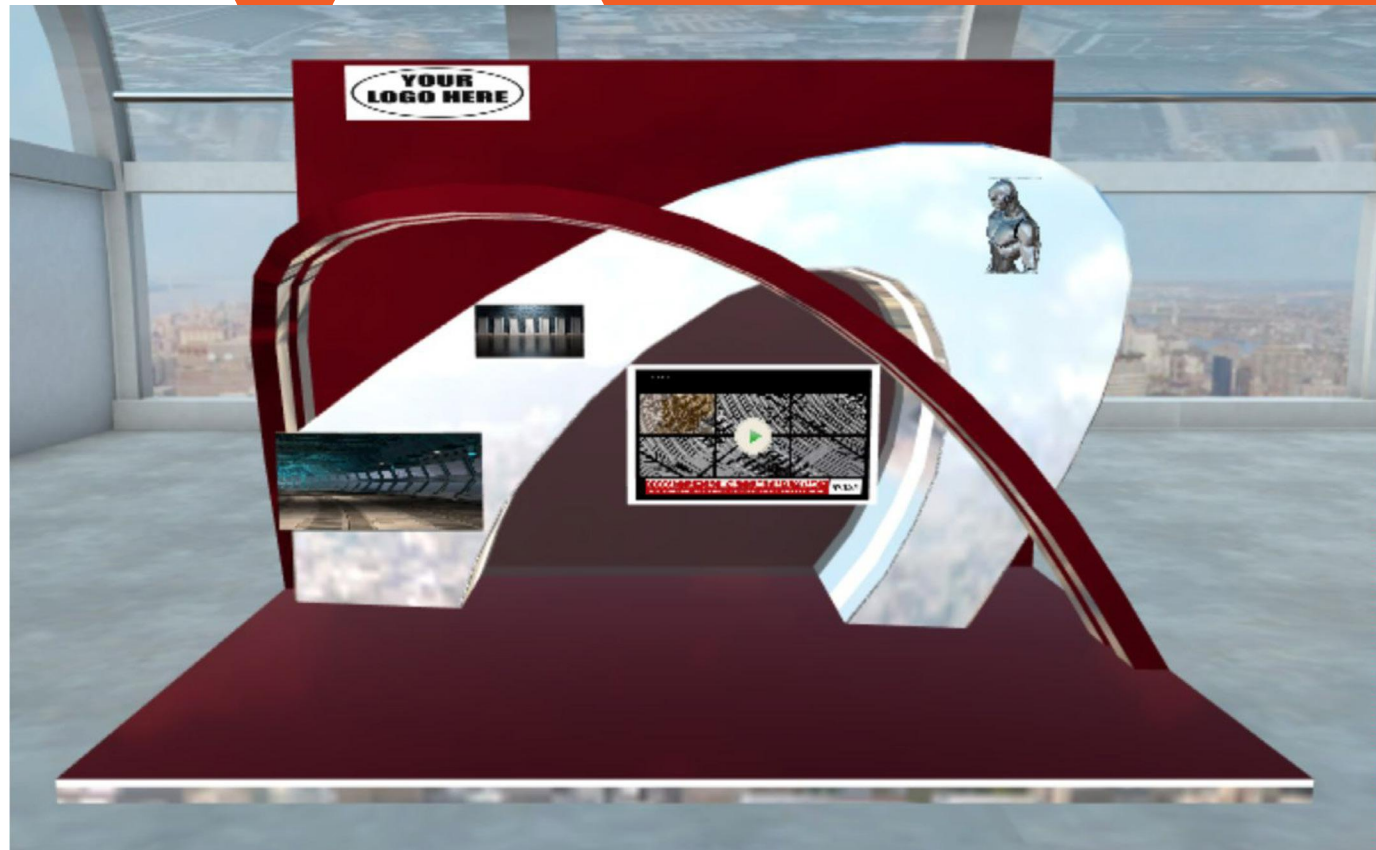
- 2 logos
- 4 content areas for video, PDFs, and images
- Color variations are available



Booth Designs

Booth 10 Features

- 1 logo
- 4 content areas for video, PDFs, and images
- Color variations are available



Technical Specs

Logos

- Acceptable file formats: .eps, .svg, .png or .jpeg
- All fonts must be outlined
- RGB color mode
- 300dpi and a minimum of 3000pixels on shortest side

Video

- Acceptable file formats: .mov, .mp4
- 720p or 1080p
- Resolution: 1920x1080 or 1080x1920 for vertical videos
- Maximum acceptable file size: 30MB

PDFs

- All fonts must be embedded
- Maximum acceptable file size: 30MB per PDF

Images

- Acceptable file formats: .jpeg, .tif, .gif or .png
- RGB color mode
- 300dpi and a minimum of 3000pixels on shortest side
- Maximum acceptable file size: 10 MB